



6TH ASIA-OCEANIA GROUP ON EARTH OBSERVATIONS (AOGEO) WORKSHOP

MACAU CHINA 5.29-31 2023

China Platform of Earth Observation System

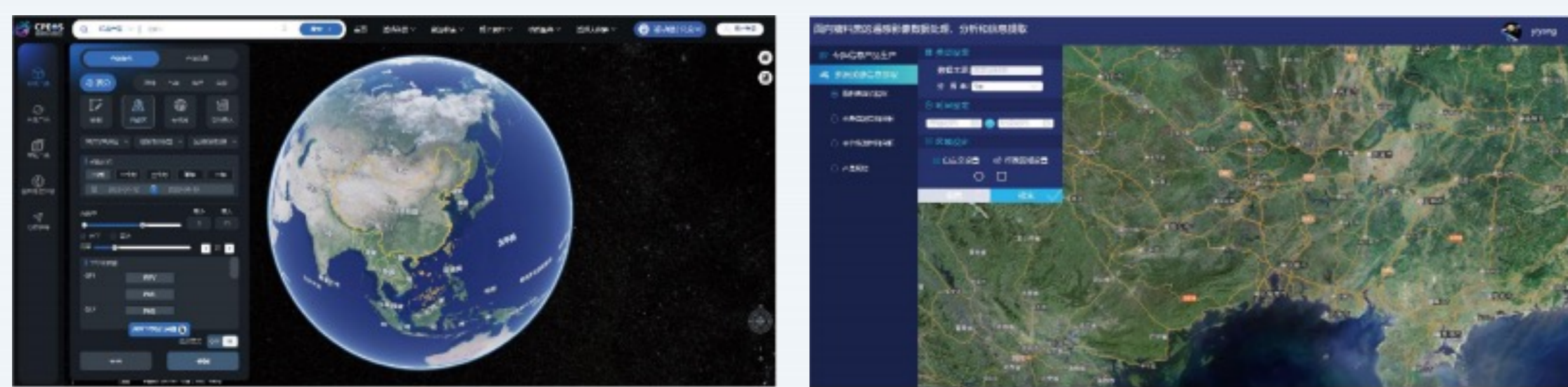
Introduction

Currently, China's high-resolution Earth observation system has been basically established, with the aim to promote the application and achievement transformation of high-resolution data, stimulate the vitality of scientific and technological innovation, promote economic and social development, facilitate extensive cooperation and exchange, strengthen the efficient connection with the construction and application of China's spatial infrastructure, and build "China Platform of Earth Observation System". This platform is a national-level, comprehensive remote sensing data product sharing and exchange service system, with the capabilities of "one click for remote sensing data query, the integration of remote sensing resources, the accounting of remote sensing achievements, and one-stop shop for remote sensing services" in China. It promotes the deep integration of high-resolution special projects and civil aerospace remote sensing satellites, and achieves national-level remote sensing resources sharing and application services across industries, regions, and domains, thus to accelerate the high-quality development of space remote sensing in the new era.



Operation Status

- Since the launch of the public version of this platform on November 21, 2022, it has collected tens of millions of scenes of satellite data and product catalog information, as well as thousands of common technological achievements, and opened registration and trial for public users and research users. With **over 5000 daily visits**, it has achieved the display and service of high-resolution achievements.
- At the stage of construction and initial operation, pilot users and relevant units worked closely together to effectively support regional comprehensive applications and China's strategies such as the Belt and Road initiative.



- ① Achieve the automatic connection of over **30 displayed satellite data** across land, ocean, atmosphere, and other fields, support the metadata collection and achievements' dynamic integration of data and product resources across domains, and provide users with services of continuously updated data on a daily basis;
- ② Provide one click retrieval and browsing services of data and products, support technologies like one click retrieval of the natural language of **over 30 million data and product records**, dynamic image publishing, multi-mode data acquisition, and provide users with innovative services such as recommended optimal download links and full resolutions' browsing;
- ③ Provide **7 types of satellite application common technologies and 7 categories of common product services**, the query for and download of common products, algorithm models, technical documentation and other public technical achievements, and promote the development and crowd innovation R&D of remote sensing technologies;
- ④ Implement two modes of services, including website service and mobile app application, support unified user login and resource services, and provide more convenient imaging services for mobile users like phones users;
- ⑤ Establish a network exhibition hall for typical industries and several regional application achievements, provide online exhibitions of special achievements of some industries or regions, display major achievements' introduction, special cases' presentation, and application efficiency,, and support the promotion of remote sensing achievements.

Service Function

◆ Public Edition

Provide services like one click search for high resolution resources and understand information including the overall situation, construction achievements, science popularization and solutions, data policies, and news about high resolution special projects.

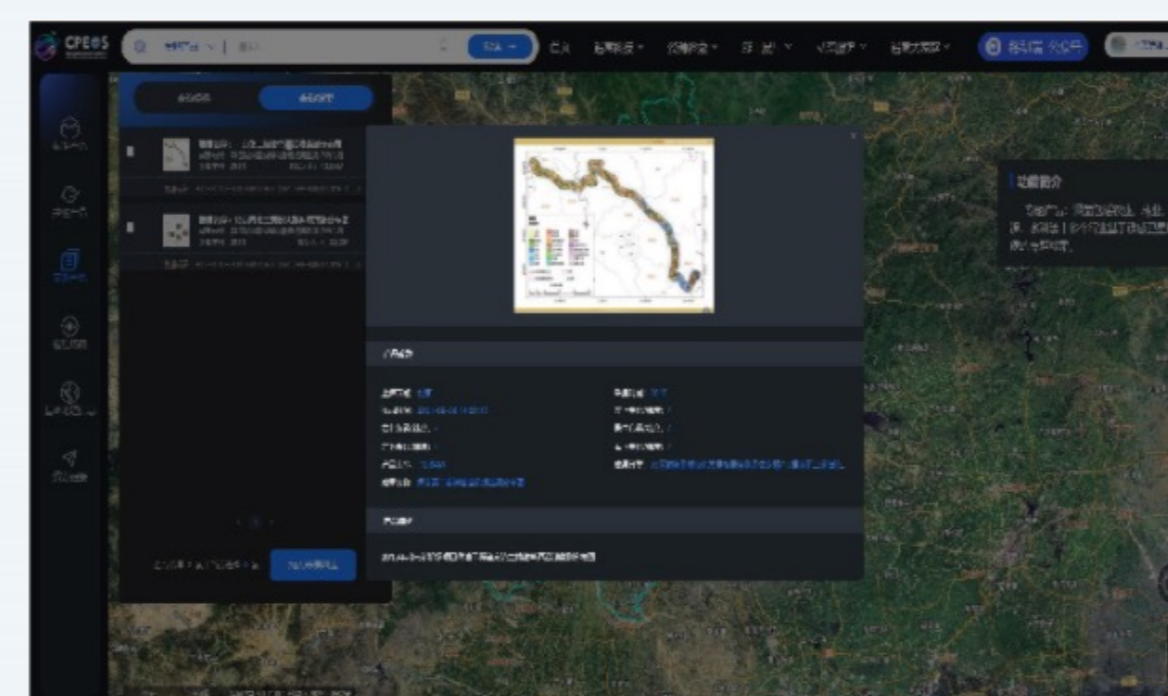
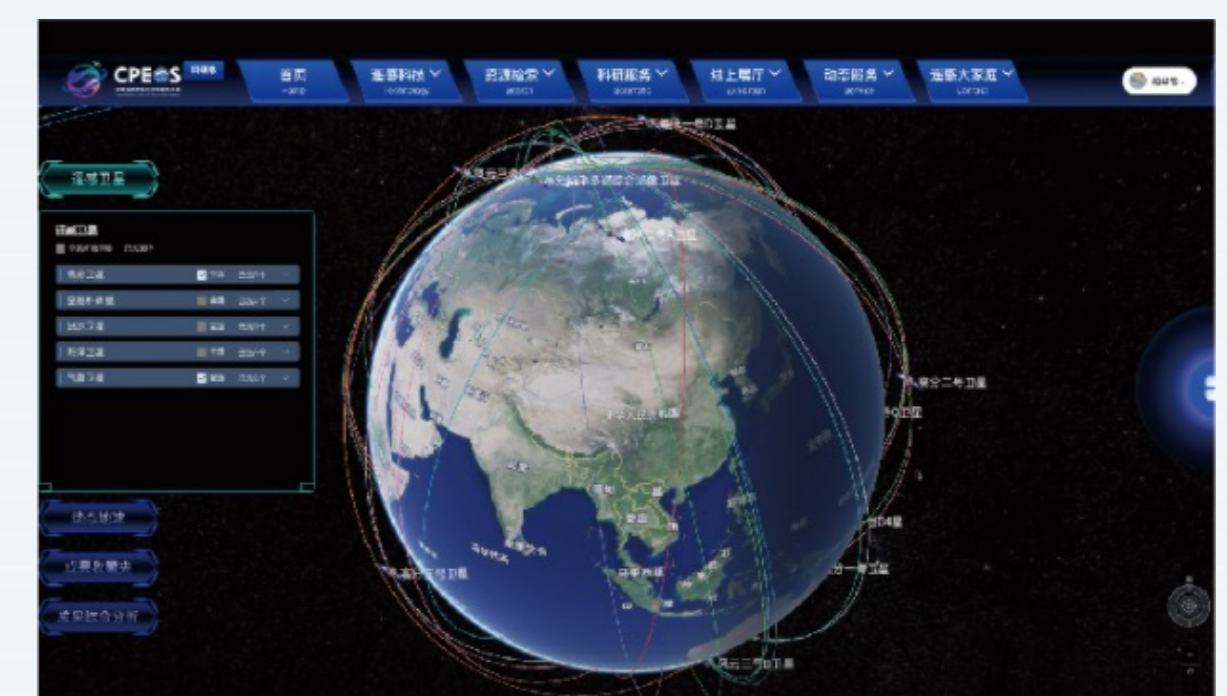


◆ Innovation Edition

Provide professional information services in the field of remote sensing application for professional users,, such as satellite data coverage, online visualization analysis and research, authenticity testing, and technical evaluation, and accelerate the development of industry technology level.

◆ Professional Edition

Provide business support services including task requirement planning, data exchange, collaborative processing, achievement aggregation, and emergency scheduling for business users of different regions and sectors, and improve the efficiency of remote sensing application services.



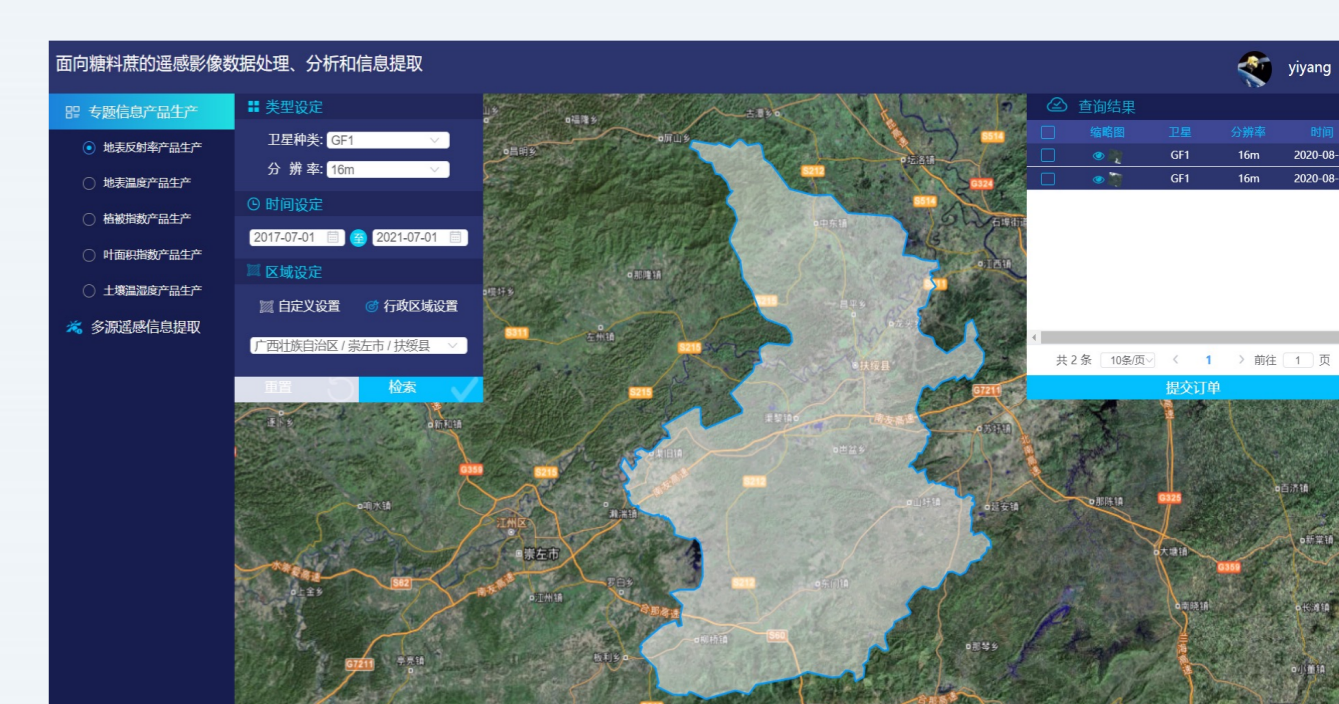
◆ International Edition

To coordinate and provide international data exchange and distribution services for international cooperative users, and leverage the roles of China's satellite remote sensing technologies in external information services and cooperation exchanges.

Application Service Promotion

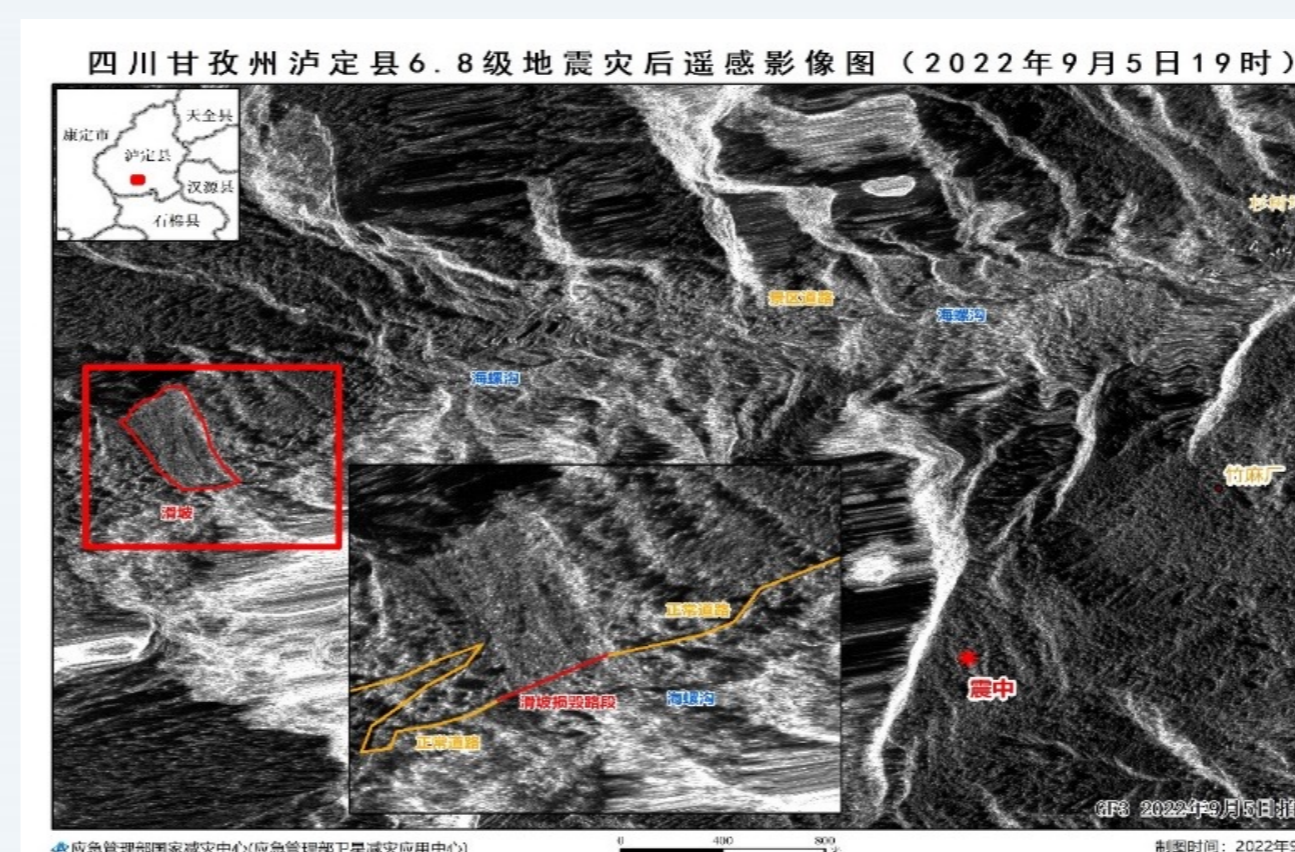
■ Guangxi Observation Center

This center has established a big data integration and service platform of sugar cane, which is interconnected with China Platform of Earth Observation System to obtain data processing integration and application support, thus to provide information product support for the development of the big data platform of sugar industry.



■ Sichuan Observation Center

This center has deeply involved in the promotion of high resolution platform applications and established the Sichuan branch node of China Platform of Earth Observation System. It is interconnected with China Platform of Earth Observation System to obtain data scheduling and emergency application support, and has served 15 units including Sichuan Provincial Bureau of Forestry and Grassland.



■ Anhui Observation Center

This center has established the first "municipal level forest chief system" forest resources management and service platform in China, with high resolution application as its main body. It is interconnected with China Platform of Earth Observation System to obtain achievement integration and demonstration services, and has achieved the promotion of high resolution remote sensing applications ranging levels from town, county, city to province.

